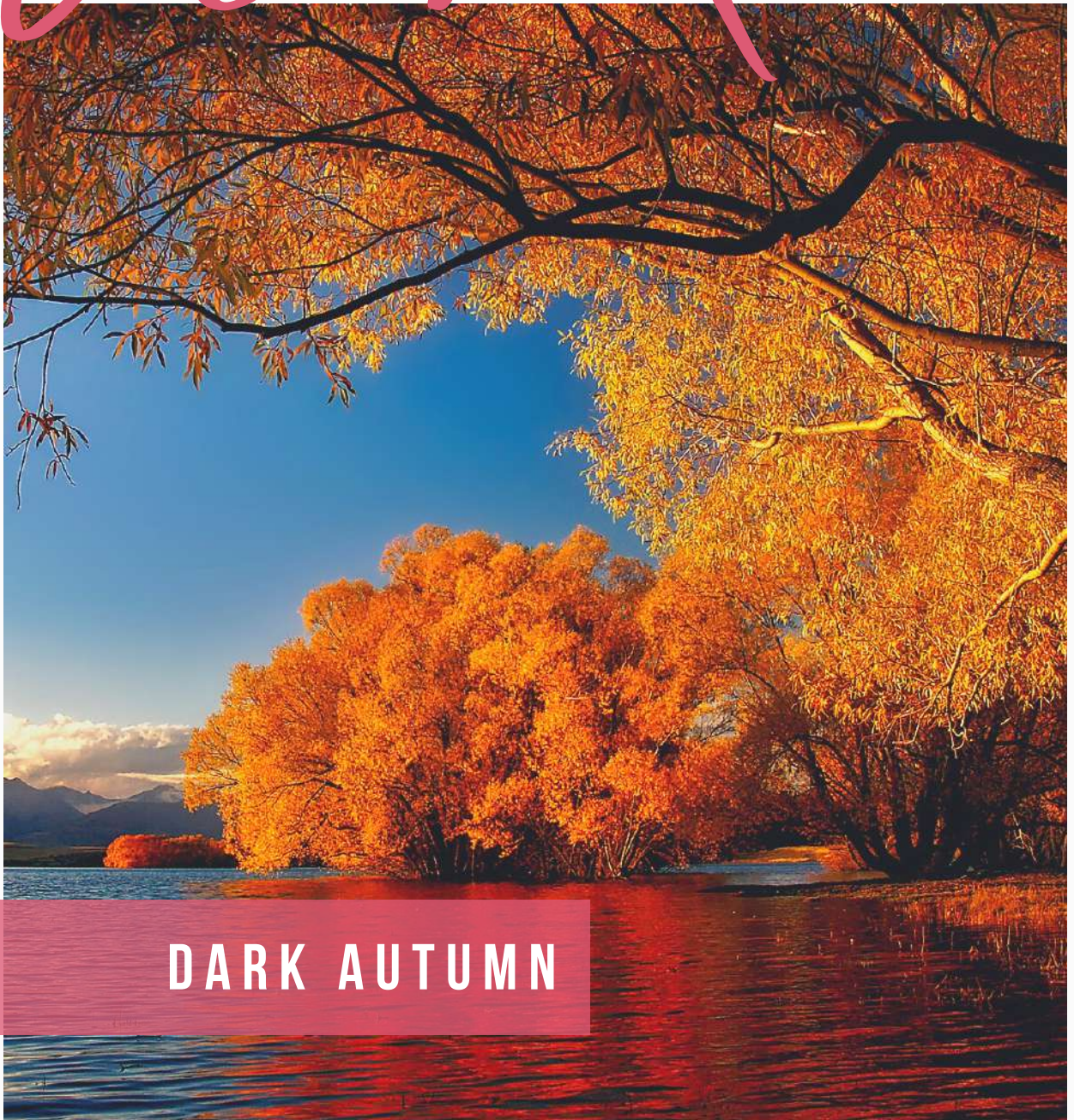


Colorbook



TAICE, THIS IS YOUR COLORBOOK

DARK AUTUMN

SOFIYA LEVINA
fashion stylist • designer

CHARACTERISTICS OF YOUR TYPE

After studying the color of your skin, hair and eyes, I can conclude that you belong to a color type with the following characteristics:

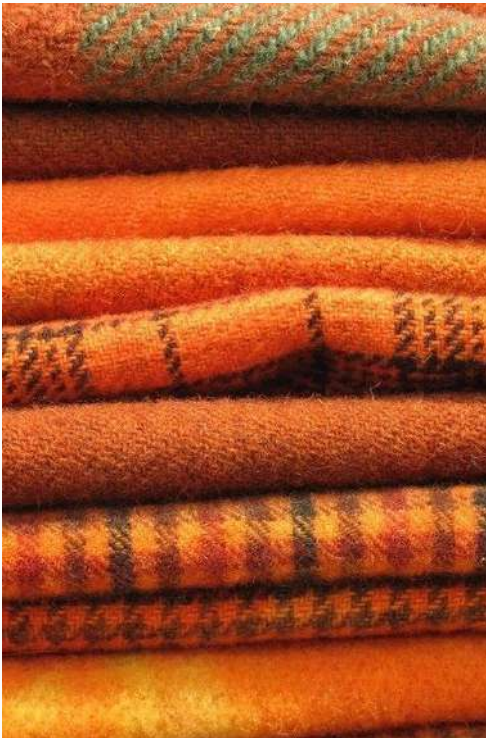
leading – **dark**, additional – **soft**, third – **warm**

Associations: deep and warm

This color type called: Dark Autumn

Dark shades serve as the basis of your looks. The contrast will be created by soft shades, and bright accents will add liveliness and dynamics to your looks. Your palette contains mostly noble deep shades and warm tones.

You have a noticeable warmth in your face; therefore, it's highly recommended to avoid cool shades.



White is the color of purity and new beginnings. Milky white or soft white with a warm touch is good for you. There is no pure black in the palette, but dark, warm grays or browns can be used. Warm light and dark grays suit you.



Brown is associated with comfort and stability. A variety of browns are suitable for you, ranging from light to dark cinnamon.



Yellow is a cheerful and active color. Warm, mustard shades and umber suit you. Yellow-green shades will also look interesting.



Green is a calming color. Dark, light green shades with a warm undertone suit you.



MAKEUP

