

Lookbook



KATE, THIS IS YOUR PERSONAL STYLE GUIDE

ROMANTIC-NATURAL

SOFIYA LEVINA
fashion stylist • designer

2 **CLIENT INFO**
Your style goals

3 **METHODOLOGY**
Слово стилиста

5 **YOUR BEAUTY TYPE**
description of your body & beauty type

9 **SILHOUETTES**
Your perfect clothes, fits and lengths

26 **FABRICS AND TEXTURES**
Examples of prints and fabrics

29 **CLOTHES AND ACCESSORIES**
Examples of clothes for your body type

46 **HAIRSTYLES AND MAKEUP**
Tips for choosing haircuts, hairstyles and makeup

51 **CLOTHES TO AVOID**
Examples of clothes that don't suit you

68 **FASHION STYLES ADAPTATION**
Examples of different styles adapted to your beauty type

77 **STARS WITH YOUR BODY TYPE**
Photos of stars and their style

88 **YOUR BRANDS**
List of brands that will suit your body

YOUR LOOK

According to Larson's typology, your style type is called **romantic-natural**, "vivacious". Your look is a combination of romantic and natural beauty.

A romantic-natural is an earthy woman, creator of comfort, keeper of the hearth, mermaid, bohemian girl of a free spirit. Your style concept is close to a romantic look but more airy and natural.

Romantic-natural is one of the most feminine beauty types because of its soft lines and body silhouette.

Natural is a creator and leader. Moto: life is a project to be built

Romantic is a keeper. Moto: life is people, who needed to be loved.



ASSOCIATIONS

The following can indicate the main directions for your outfits:

- Romantic
- Natural
- Ethereal
- Warm
- Pleasant
- Pretty
- Open
- Soft
- Gentle
- Calm
- Free
- Stable
- Hospitality



YOUR SILHOUETTES

Both angular necklines and round necklines are suitable for you. Rounded shapes will highlight romantic features.

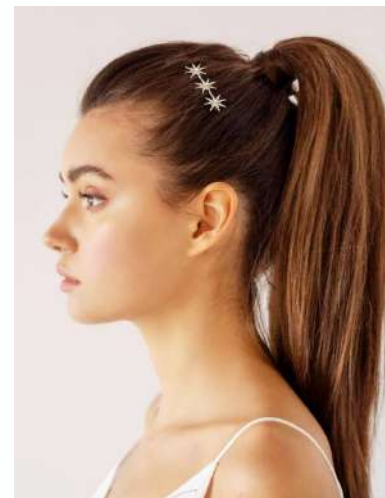


BLAZERS

Blazers should be short and tight, with lots of detail and trim. They should always accentuate your waist. They can be trimmed above the waist or into a neat peplum. Contrast stitching, cuffs, and shoulder trim work in your favor. If you are buying a straight, long blazer, be sure to add a contrasting belt.



HAIRCUTS



BELTS

Avoid: heavy and rigid belts with sharp geometry.

